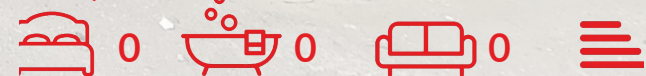




Unit 8c Colne Valley Business Park, Huddersfield, HD7 5QG

£750 Per Month + VAT





Area Map



Details:

Amco Commercial are pleased to offer this Ground Floor Unit.

Location - The premises known as the Colne Valley Business Park is located on the corner of Manchester Road and Hoyle House Fold in Linthwaite. Nearby tenants include the Premier Shop, Ricky's School of Rock, The Fun Factory and The Black Belt Karate Club.

Accommodation - The premises have ground floor access with large roller shutter and passenger door. The total floor area is 1198sqft

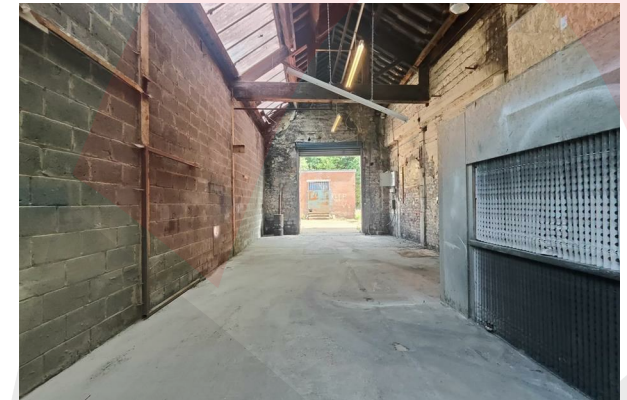
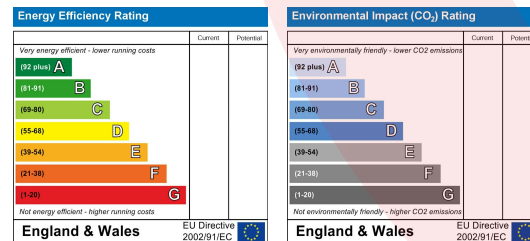
Viewings - If you are interested in viewing this property, or to request additional information, please do not hesitate to contact one of our agents 0161 773 3978

These particulars are only a guide. They are not exact or guaranteed. Property offered subject to contract.

Viewing

Please contact us on 0161 773 3978 if you wish to arrange a viewing appointment for this property or require further information.

Energy Efficiency Graph



These particulars, whilst believed to be accurate are set out as a general outline only for guidance and do not constitute any part of an offer or contract. Intending purchasers should not rely on them as statements of representation of fact, but must satisfy themselves by inspection or otherwise as to their accuracy. No person in this firm's employment has the authority to make or give any representation or warranty in respect of the property.

3 Middleton Road, Manchester, M8 5DT

T: 0161 773 3978 | F: # | info@amcocommercial.co.uk

www.amcomanagement.com

